



# GCDFP-15 (ABT175) Mouse mAb

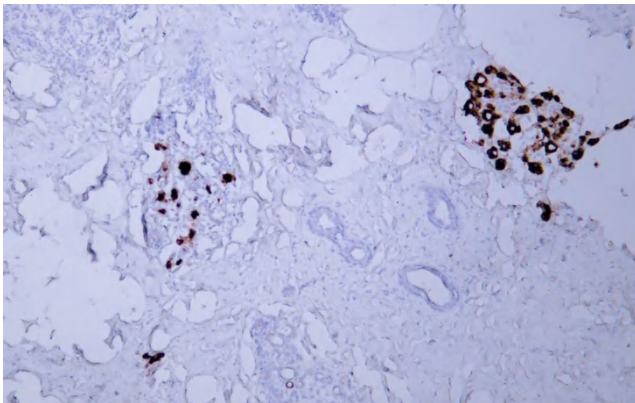
<b>Catalog No</b>	YP-Ab-15702
<b>Isotype</b>	IgG
<b>Reactivity</b>	Human
<b>Applications</b>	IHC
<b>Gene Name</b>	PIP GCDFP15 GPIP4
<b>Protein Name</b>	BRST-2;BRST2;GCDFP-15;GCDGP15;gp17;GPIP4;Gross cystic disease fluid protein 15;PIP;PIP_HUMAN;Prolactin induced protein;Prolactin inducible protein precursor;Prolactin-induced protein;Prolactin-inducib
<b>Immunogen</b>	Synthesized peptide derived from human GCDFP-15
<b>Specificity</b>	The antibody can specifically recognize human GCDFP-15 protein.
<b>Formulation</b>	PBS, pH7.2, 0.03% Porcolin 300, containing stabilizing protein
<b>Source</b>	Mouse, Monoclonal/IgG1, Kappa
<b>Purification</b>	The antibody was affinity-purified from mouse ascites by affinity-chromatography using specific immunogen.
<b>Dilution</b>	IHC-p 1:200-400,
<b>Concentration</b>	1 mg/ml
<b>Purity</b>	≥90%
<b>Storage Stability</b>	-20°C/1 year
<b>Synonyms</b>	BRST-2;BRST2;GCDFP-15;GCDGP15;gp17;GPIP4;Gross cystic disease fluid protein 15;PIP;PIP_HUMAN;Prolactin induced protein;Prolactin inducible protein precursor;Prolactin-induced protein;Prolactin-inducible protein;SABP;Secretory actin binding protein;Secretory actin-binding protein
<b>Observed Band</b>	
<b>Cell Pathway</b>	Cytoplasmic
<b>Tissue Specificity</b>	Breast
<b>Function</b>	induction:By prolactin and androgen; inhibited by estrogen.,similarity:Belongs to the PIP family.,subunit:Monomer. Interacts with AZGP1.,tissue specificity:Expressed in pathological conditions of the mammary gland and in several exocrine tissues, such as the lacrimal, salivary, and sweat glands.,
<b>Background</b>	
<b>matters needing attention</b>	Avoid repeated freezing and thawing!



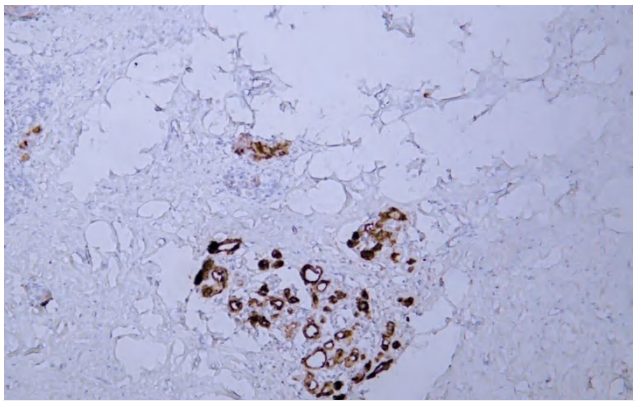
### Usage suggestions

This product can be used in immunological reaction related experiments. For more information, please consult technical personnel.

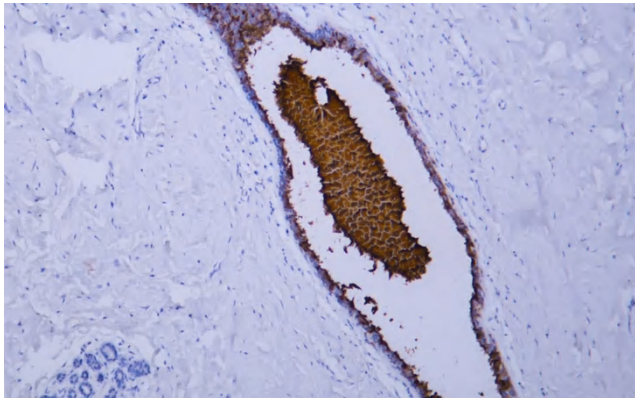
## Products Images



Human breast tissue was stained with Anti-GCDFP-15 (ABT175) Antibody



Human breast tissue was stained with Anti-GCDFP-15 (ABT175) Antibody



Human breast carcinoma tissue was stained with Anti-GCDFP-15 (ABT175) Antibody